

3Ts Hospital Development

BHCC Health Overview and Scrutiny Committee

19 October 2022

Karen Geoghegan, Chief Financial Officer

Peter Larsen-Disney, Clinical Director for 3Ts Programme

A new hospital in the heart of Kemptown



98



3Ts - introduction

The Full Business Case for the provision of new acute hospital estate at the Royal Sussex County Hospital, Brighton was approved in 2015 and supports delivery of a new regional **Teaching, Trauma and Tertiary Care (3Ts) Centre to support patients across all of Sussex.**

- The Programme is in 3 distinct phases: Stage1, 2 and 3
- The total capital cost is 0.£7bn across all 3 stages
- Provides 100 more beds on Brighton site
- Laing O'Rourke are the appointed contractor for all 3 stages of the build programme
- 3Ts is part of the 40 Hospitals programme, now overseen by the New Hospitals Programme team

Redeveloping the hospital estate

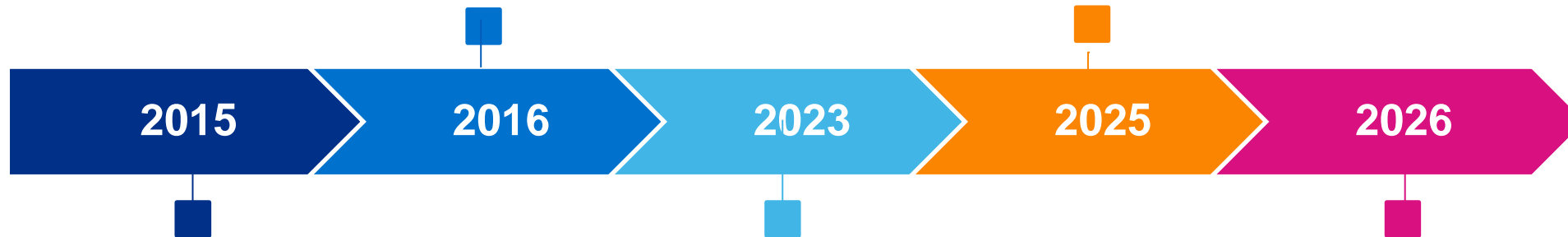


- Pre-Stage 1: decant and site diversions
- **Stage 1** – Replacement of Barry Building, enhance Major Trauma Centre facilities for Sussex incl critical care and helideck
- **Stage 2** – Replacement and expansion of Cancer Centre for Sussex
- **Stage 3** – Site-wide Logistics Centre

100

Building commenced

Stage 2 Cancer Centre opens



Full business case approved

Stage 1 opens for patients

Stage 3 Logistics Centre opens

Stage 1 – four phases to completion

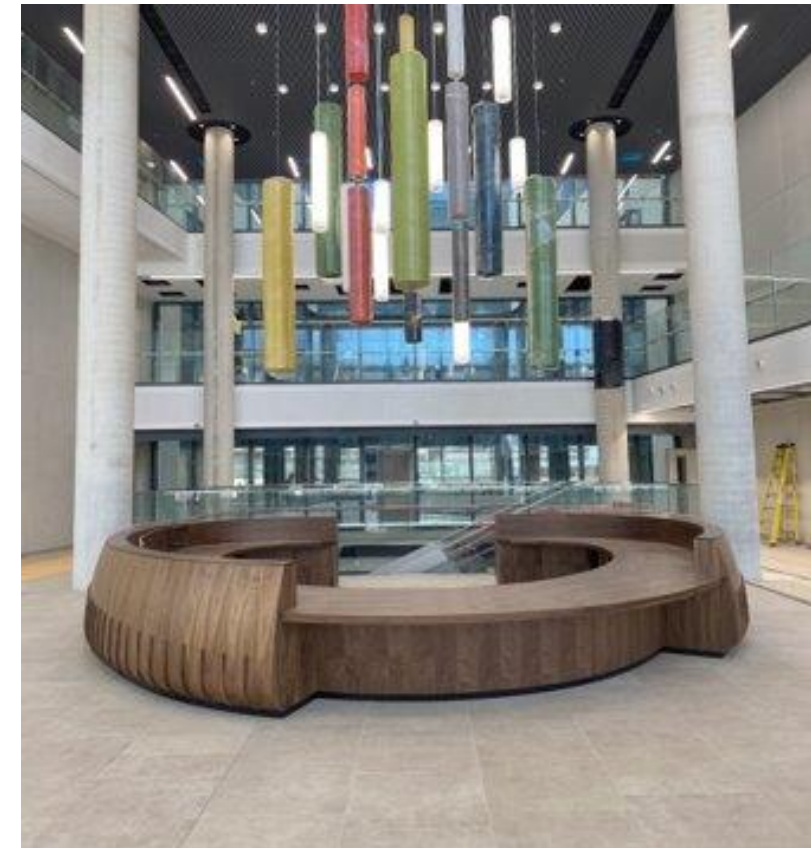


101

Stage 1 - Facts and Figures

More than one million patients, visitors and staff will be passing through the hospital's new Main Entrance and Welcome Space every year

- The Welcome Space is more than twenty times bigger than the current main entrance of the hospital.
- Stage 1 has an internal floor area of 62,375m² – that's four times the size of the Royal Alexandra Children's Hospital
- 32 wards and departments that provide direct patient care will move into Stage 1
- Every year, more than 100,000 patients will receive care in the new building.
- There are 11 storeys above ground and two basement levels, including a car park for patients and visitors



Main reception desk in the Welcome Space

Stage 1 - Benefits

Better for inpatients

- Five times more space around each bed
- 65% single ensuite rooms
- Remainder are in 4-bed bays
- Most rooms have stunning sea views
- More clinic space enables more ward-based treatments
- New lounges and private space for patients and visitors



Medical ward four bed bay

Better for outpatients and visitors

- Clinics located on the lower floors to improve access
- Larger and more comfortable waiting areas
- Privacy and dignity improvements
- Improved retail and catering facilities
- Improved access from underground car park
- New bus stop and pedestrian crossing near entrance
- Direct links to Thomas Kemp Tower on levels 5, 6 and 7



Fracture clinic reception

Stage 1 - Benefits

Better for staff

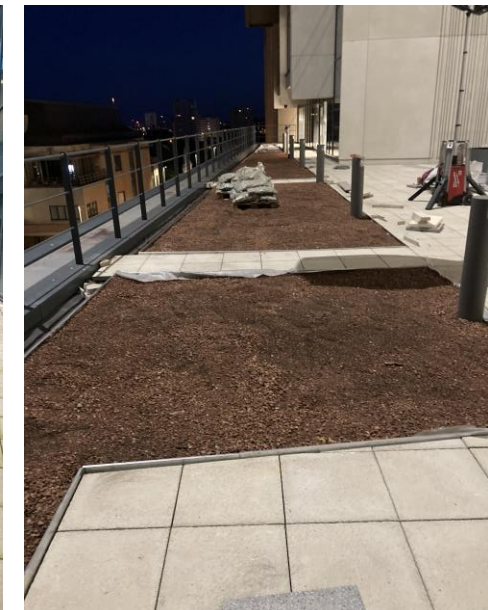
- Many new career pathways and opportunities
- More than 125 new jobs in Facilities and Estates, including house-keeping, porters and estates
- New roles for nurses, healthcare assistants and allied health professionals such as physios, radiographers and dietitians
- Improved staff welfare facilities such as changing rooms, lockers and showers
- Dedicated meeting and teaching suite



Critical Care staff review patient equipment

Better for the environment

- Planting 29 trees and 1400 shrubs and perennials
- Seeding 450m² to grass and wildflowers
- Installing more efficient boilers for the Thomas Kemp Tower, Millennium Wing and A&E Building



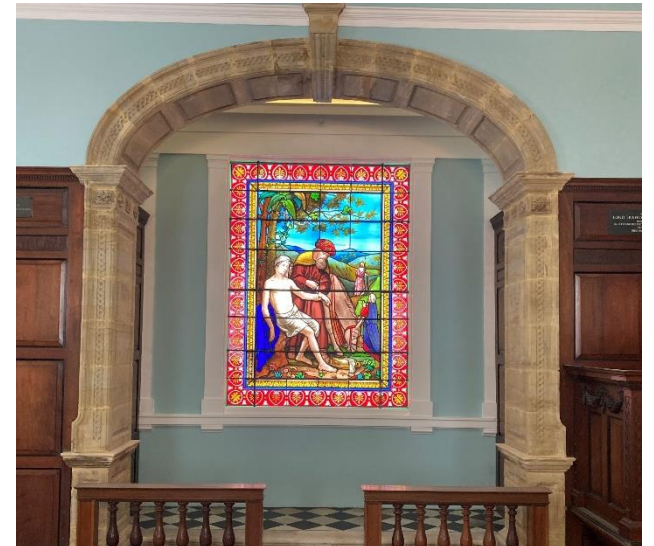
Green spaces on Levels 1 and 4

A new building that preserves the best of the old

- Preserving links to the 194-year history of the hospital is an important part of the 3Ts Redevelopment
- This is typified by the completed relocation of the 165-year-old Chapel from the Barry Building (the oldest acute ward building in the NHS) to its new home in the Stage 1 Building
- Every brick, panel, brace and windowpane was recorded, numbered, stored off site and then reinstalled in the Chapel's new home in Stage 1
- It is at the end of the Welcome Space on Level 1 and easily accessible to everyone
- Along with the Sanctuary on Level 6, it will be available for services as well as welfare and social events, meetings, and to play a part in the heritage story of the hospital



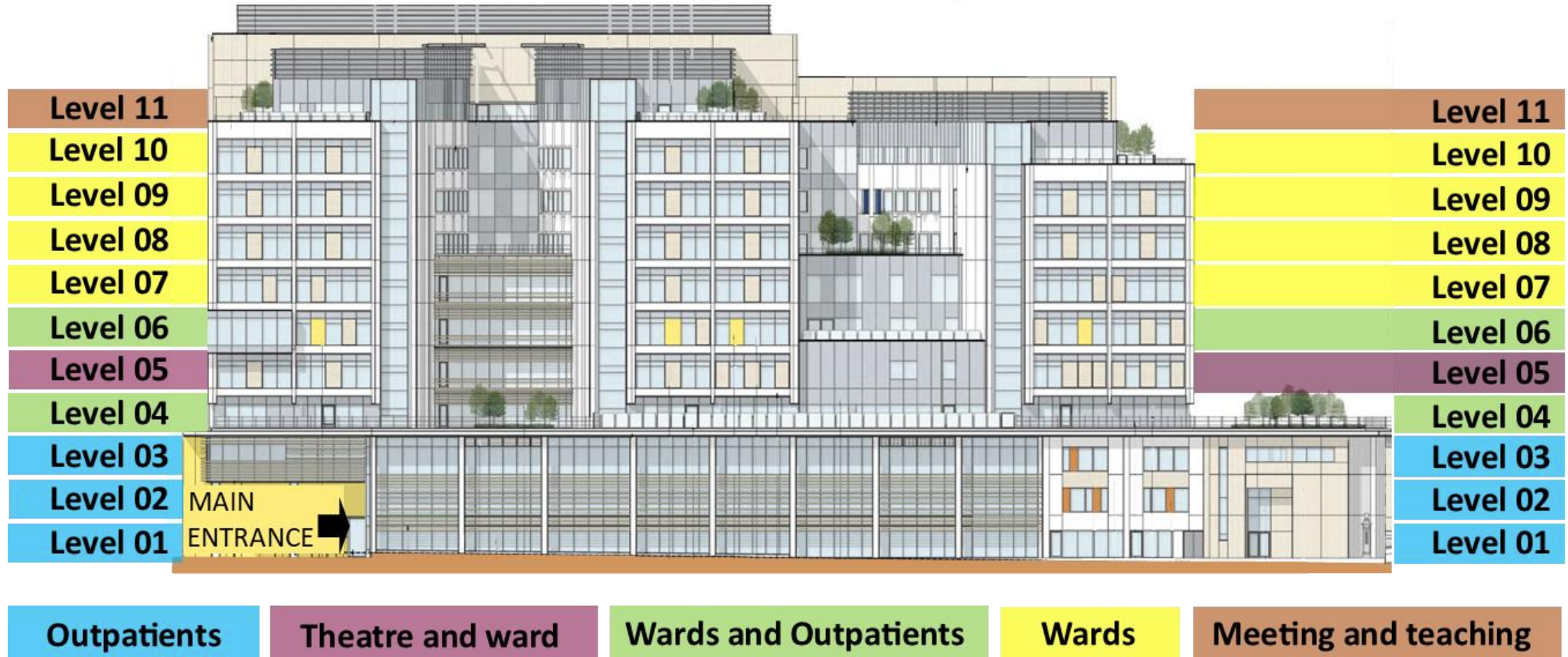
2020 in the Barry Building



Chapel relocated in 2022

Stage 1 – clinical focus by floor

3Ts Redevelopment – Stage 1



Clinical facts and figures

Inpatient facilities

- 7 inpatient wards
- 256 inpatient beds
- 65% single rooms with their own bathrooms
- Large 4-bed bays
- Treatment rooms



Medical ward reception area



Inpatient transfer corridor

Outpatients

- 7 outpatient departments
- Inpatient rehabilitation gym

Theatres

- 4 operating theatres
- 3 interventional radiology suites



Single en-suite room



Maxillo-facial dentistry room

Clinical facts and figures

Critical Care

- 31 critical care beds
- Co-location of critical care services

Diagnostic Radiology

- 3 MRI scanners – including intra-operative MRI
- 2 CT scanners
- 3 X-Ray/fluoroscopy rooms
- 2 Ultrasound rooms

Nuclear Medicine

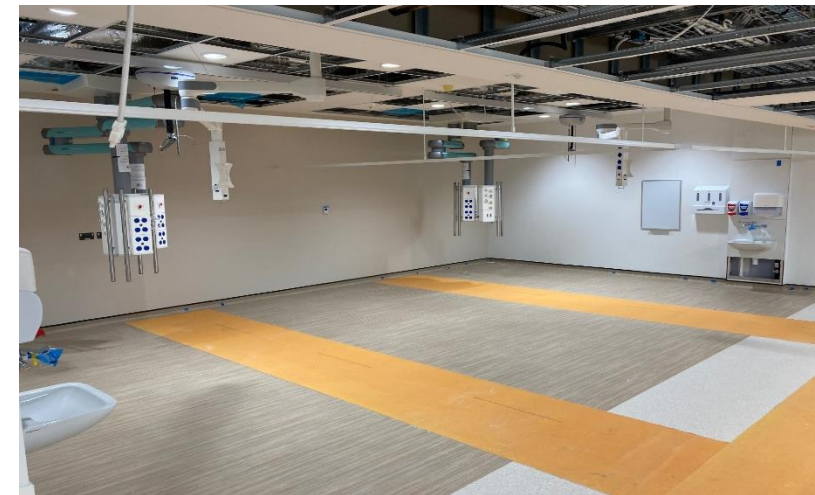
- 1 x PET Scanner
- 2 x SPECT CT scanner
- 1 x heart scanner



Neurosurgery intraoperative
MRI



Critical Care ward station (west)



Critical Care bay with pendants fitted

Clinical Benefits

New models of care and clinical pathways;

- Expanded acute floor with direct links to Emergency Department
- New Short Stay Medicine Ward adjacent to Emergency Department
- New respiratory ward to manage patients with complex respiratory disease
- New care of the elderly ward including a dementia unit and an acute frailty unit
- Planned Investigation Unit enables patients requiring complex investigations to be treated as day cases
- Improved facilities for patients with complex strokes
- Helideck will reduce patient transfer times to the Major Trauma Centre
- Reduced patient transfers through co-location of clinical services



Current Discharge Lounge



New Discharge Lounge

3Ts Communication and Engagement

Hospital Liaison Group meetings

- Regular meetings since 2009
- Open to anyone living or running a business within ¼ of a mile of RSCH
- Focuses on the 3Ts Redevelopment and other operational matters
- Use of social media and distribution lists with local groups and residents

Share A Name initiative

- Patients, members of the public and staff were invited to suggest a name for the Stage 1 Building
- 690 names were received
- The Board will choose the final name from a short list of suggestions

Rolling programme of onsite visits

- Members of HOSC will be invited before the end of the year

Share a name

Help us name the new building at Brighton's Royal Sussex County Hospital

#ShareAName

@UHSussex

uhsussex.nhs.uk/shareaname

Submissions by 28 August 2022

Developing opportunities

- Bringing together clinical services into the Stage 1 building frees up clinical space for other developments and improvements across the whole of the University Hospitals Sussex
- Develop estates masterplan for the Royal County Hospital site to take advantage of capacity unlocked by Stage 1 that will help us improve a range of other services for patients
- Scoping and planning work for improvements to the Emergency Department at Brighton are already underway
- Planning for new Cancer Centre (Stage 2) is underway
- Opening of the new helideck on Thomas Kemp Tower in 2023 will improve care for major trauma patients
- Collaboration with Brighton and Sussex Medical School and other partners to expand teaching and training opportunities

Thank you

Q&A

Karen Geoghegan, Chief Financial Officer

Peter Larsen-Disney, Clinical Director for 3Ts Programme

112